

SOFTWARE
UPDATE

The fifth generation of the *Proteus*® DMA 242 measurement and analysis software has been released.

Intensive dialog with users has made it possible to both make detailed improvements to existing functions and implement a series of new ones. The support of many users has played a decisive role in making *Proteus*® even more user-friendly and effective. *Proteus*® DMA 242 has undergone not only a facelift for a more modern appearance but also technical improvements including:

- *Proteus*® can be used with WINDOWS 7, 32- and 64-bit in the Professional, Enterprise and Ultimate versions
- Interactive help for selection of the correct measurement parameters.
- Forward and backward navigation in the tab pages of the measurement software and color-coded identification of the inputted information assist the user in creating measurement programs.
- The hideable „Contents Tree“ provides an overview over all loaded measurement curves and curve operations in the analysis software. Undo and redo functions are available for curve operations on a step-by-step basis.
- The user interface is available in English, German, French, Russian and Chinese.

Proteus® DMA 242 allows for even more efficient operation of the thermo-analytical and thermophysical measurement instruments by NETZSCH. The data gleaned can be more quickly interpreted and more easily documented.

With the introduction of the fifth generation of *Proteus*®, instruments of the NETZSCH 200 and 400 product series are supported. The new version has considerably expanded upon and optimized measurement, analysis and customer service functions.



Measurement and Analysis

- The DMA 242 measurement software features a new, simplified user interface with modern shortcut buttons (icons), an input assistant and also a protocol window.

For all instruments with TASC 414/4 and instruments of the PC series, furnaces as well as their sample and furnace thermocouples will be automatically detected.

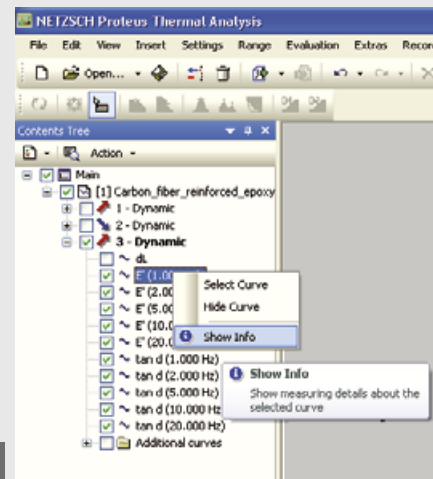
- 1 The new, simplified user interface with "input assistants" allows properties and methods from the files of measurements previously executed to be applied by a simple mouse-click.

- Modern input masks support forward and backward navigation in the tab pages.

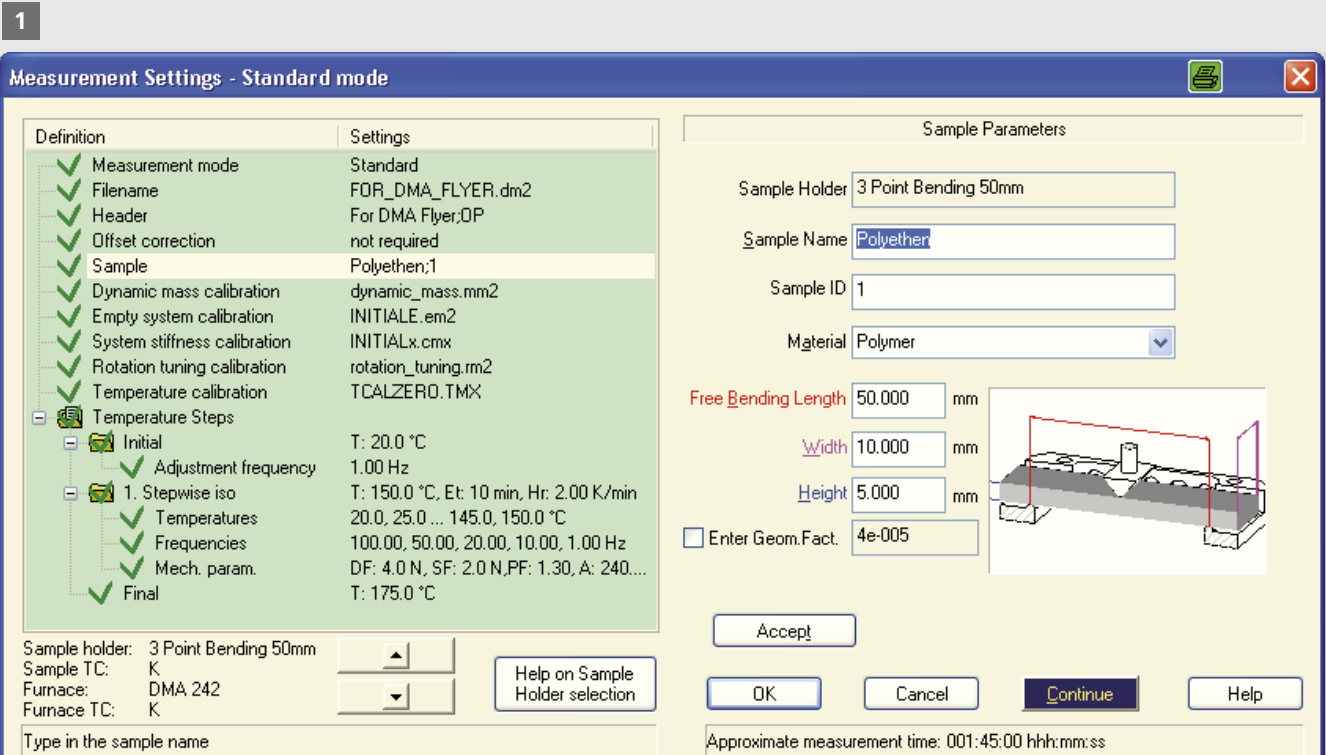
- Entries that are missing or need to be checked are marked with colored symbols.
- The hideable protocol window details the instrument status and measurement progress along with important service information.
- To supplement the context-sensitive program description in the integrated Help system, the software also supports direct access to operating manuals and guides as well as to spare parts catalogs in PDF format, which are installed automatically on an instrument-specific basis.

New File Features

After loading or removing measurement files or segments, axis-scaling can be automatically adjusted or retained.

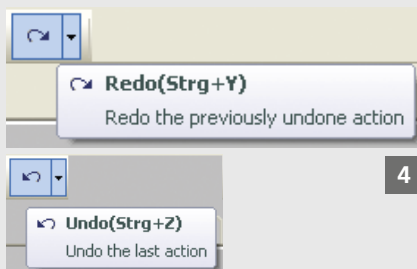
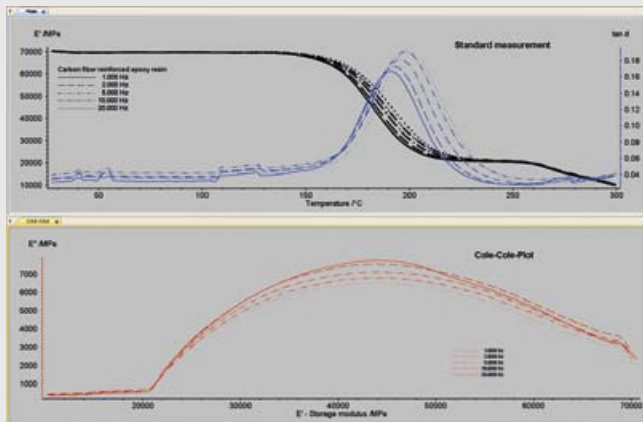


2



Improved, Newly Structured User Interfaces

- 2 An overview over all loaded measurement curves and curve operations is provided in the new hideable 'Contents Tree' on the left. This allows both quick configuration of the analysis (show/hide curves) and retraceability for the calculation of subsequent curves.
- 3 With the help of the multiple-window technique, analyses can be split into different windows. This allows, for example, the depiction of Master-Curves or Cole-Cole-Plots in additional evaluation windows. The

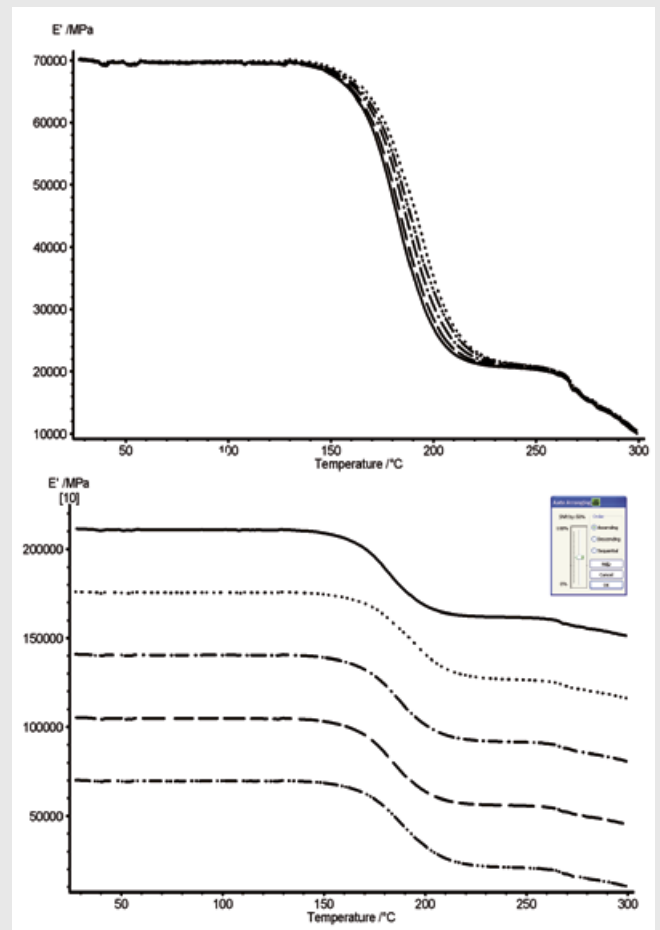


'Copy Window' command generates a copy of the active window.

- The tabs assigned to the additional evaluation windows can be individually named.
- 4 With the 'Undo' and 'Redo' functions, individual actions can be undone step by step and any undone actions can be redone.
- By clicking on the measurement curve, segments can be easily shown and separated.

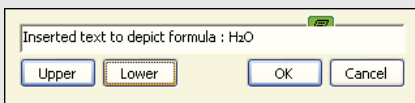
Expanded Graphic and Evaluation Functions

- 5 Automatic arrangement of curve sets along the y-axis. Curves can be freely shifted with regard to the assigned y-signal axis.
- Enlarged sections (zoom) can be freely shifted along the x-axis.
- Texts from the clipboard can be inserted into the *Proteus*® evaluation graph.

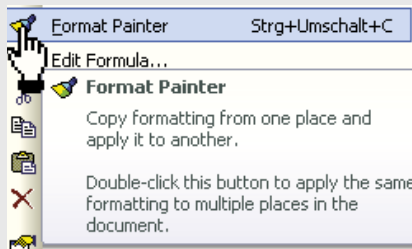


Expanded Graphic and Evaluation Functions (continuation)

- Text entries with subscripts and superscripts allow professional depiction of simple chemical formulas.



- Comprehensive entry of texts in the evaluation graph: In addition to conventional insertion of free text, standardized curve descriptions and pre-defined texts can also be inserted.
- With the new 'Format Painter' function, text attributes (e.g. font, color) can be easily carried over within the evaluation.
- Optional display of results with both x-values for temperature and time.



- The curve legends in the evaluation graph can be configured.
- Optional display of the x- and y-curve values in the form of tooltips when moving the mouse along the curve.

Expanded Export Functions

- The evaluation graphs can be copied to the clipboard or saved as a file in JPG, TIF, PNG, BMP or EMF format.

- Output of the measurement data, parameters and results either to the printer or as a PDF or ASCII file.
- Export of the results with key words as an ASCII or in the Excel-compatible CSV format for better identification and further utilization in databases, for statistics, etc.

6

